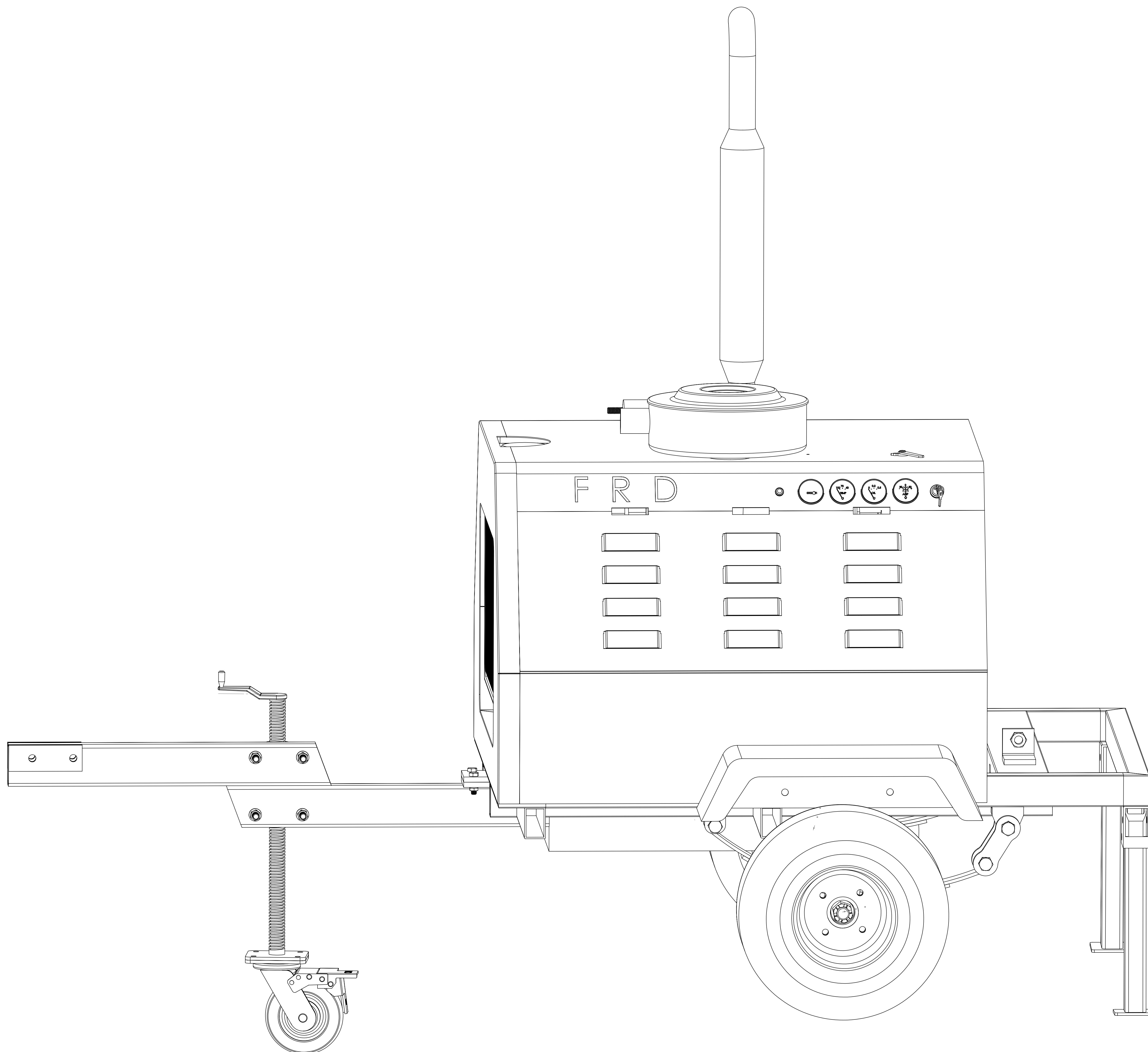
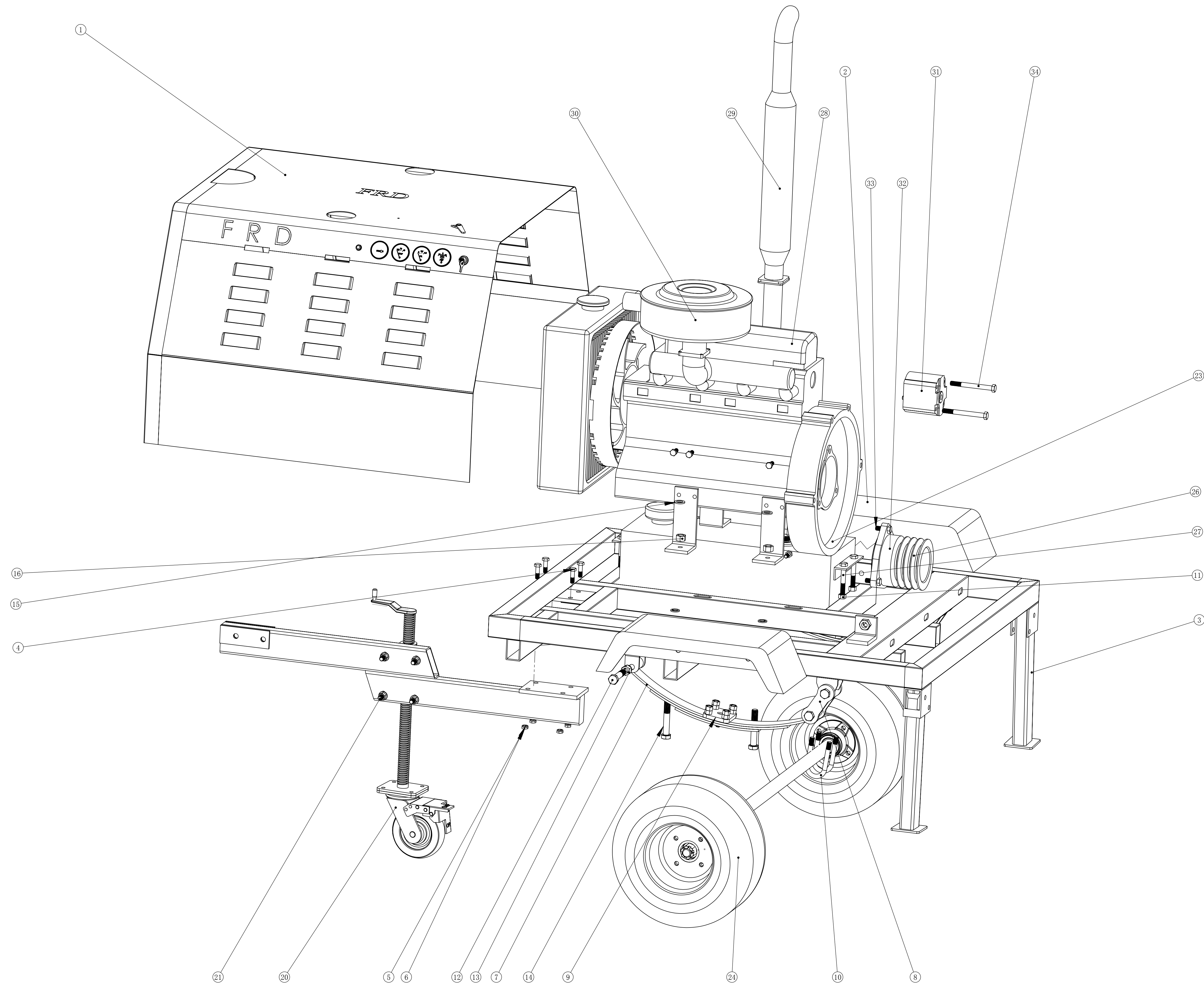


FRD-DH					
ITEM	PART NUMBER	PART NAME	QTY.	MATERIAL	REMARK
1	DH001	POWER SYSTEM UNIT	1		ASSEMBLY
2	TY001	BELT ADJUST BACKING BOARD	1	Q235	SELF-M
3	B018	ADJUSTABLE BOLT	1		GB/T 5782-2000
4	DH002	CHIPPING SYSTEM UNIT	1		ASSEMBLY
5	B070	BELT B1080	4		
6	DH008	CHIPPER CHUTE EXTENSION	1		ASSEMBLY
7	B013	BOLT M16x140	3		GB/T 5782-2000
8	B021	LOCKNUT 16	3		GB/T 889.1-2000
9	TY003	CHUTE CONNECTION PLATE	4	45 STEEL	
10	B017	BOLT M10x25	12		GB-T 5780-2000
11	B040	SPRING WASHER 10	12		GB/T 95-2000
12	B022	NUT 10	12		GB/T 41-2000
13	TY004	FEED ROLLER CONTROL BAR	1		WELDMENT
14	TY005	Handle Teleflex	2		WELDMENT
15	TY006	RING-PULL	2	45 STEEL	

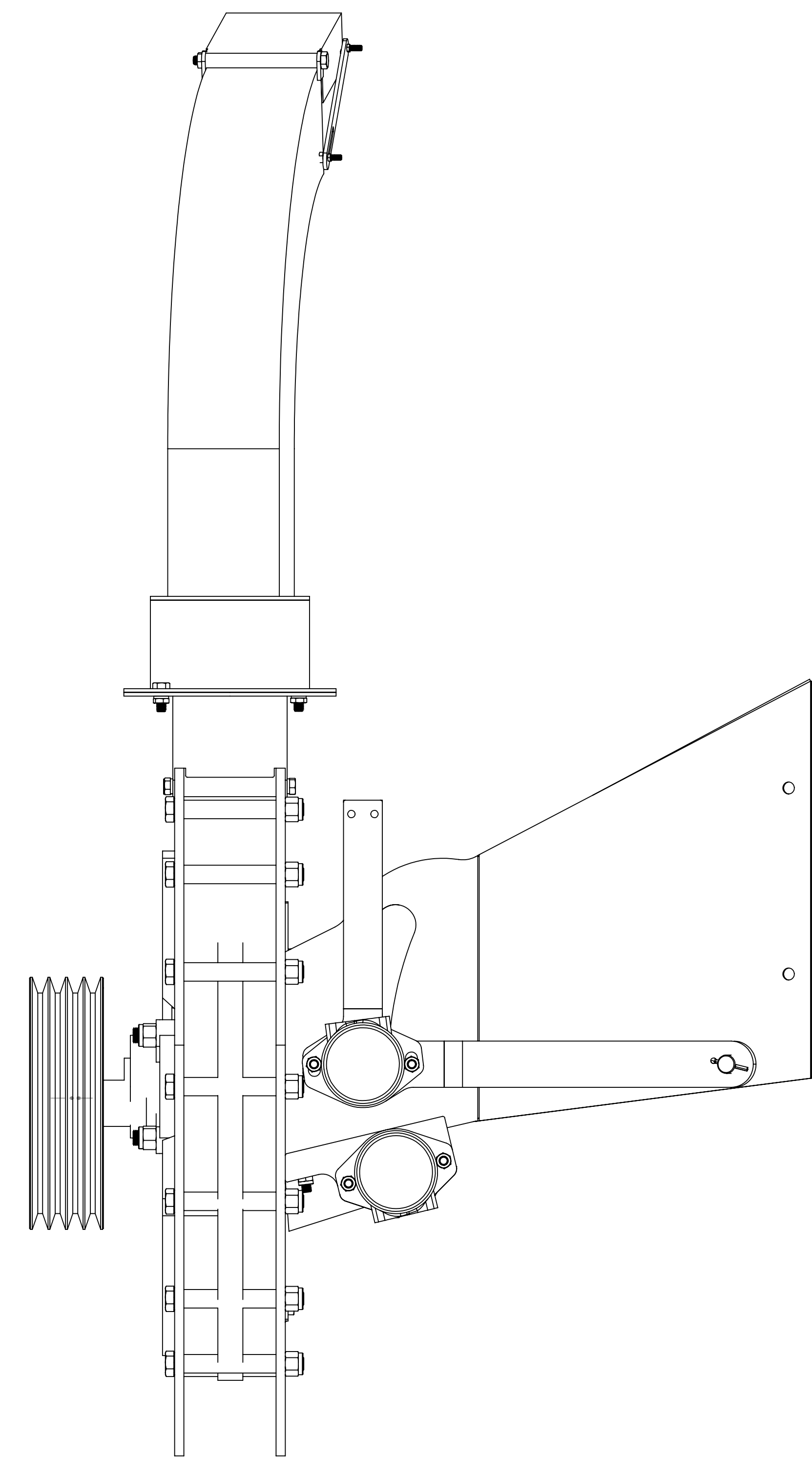
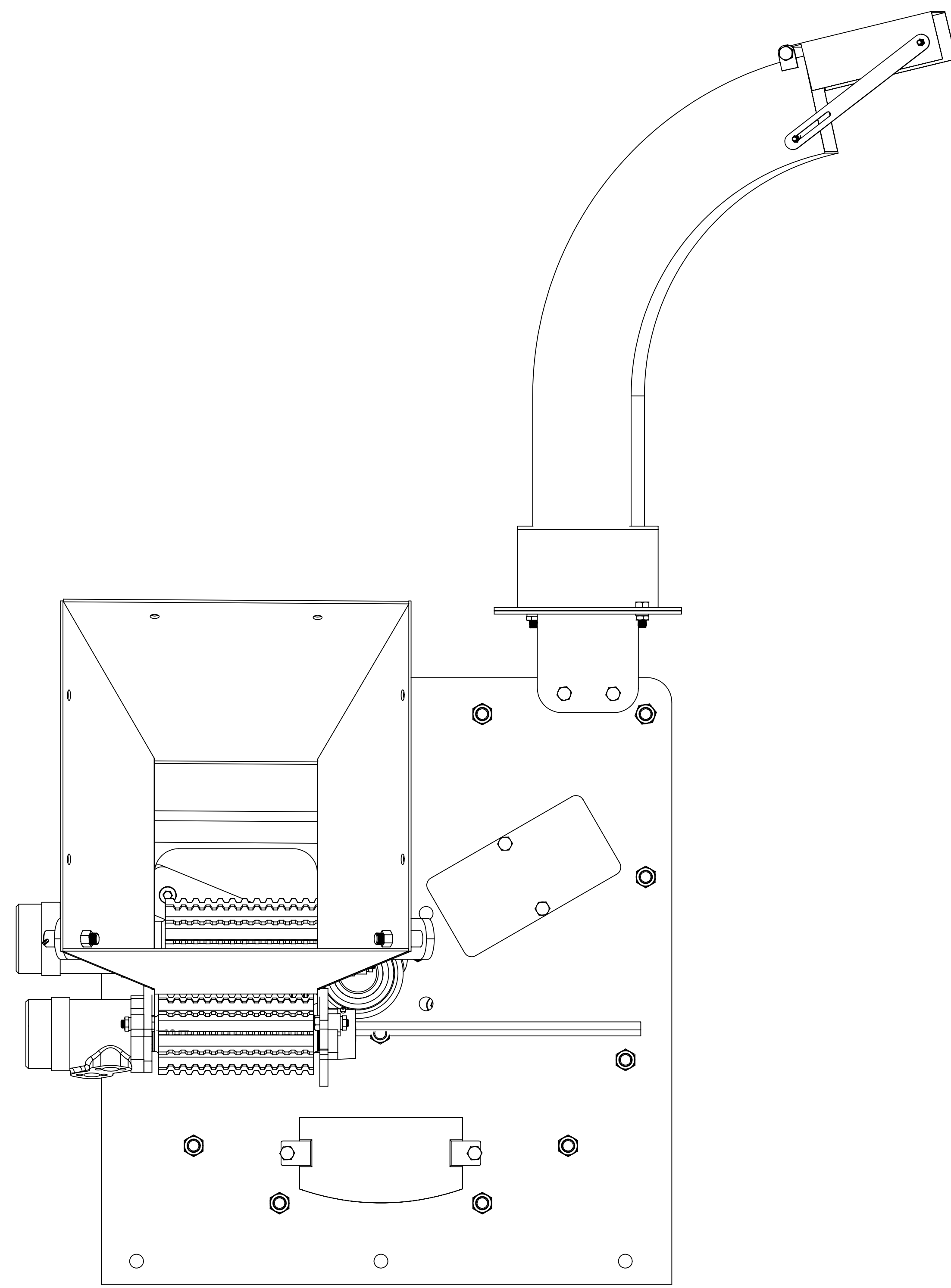


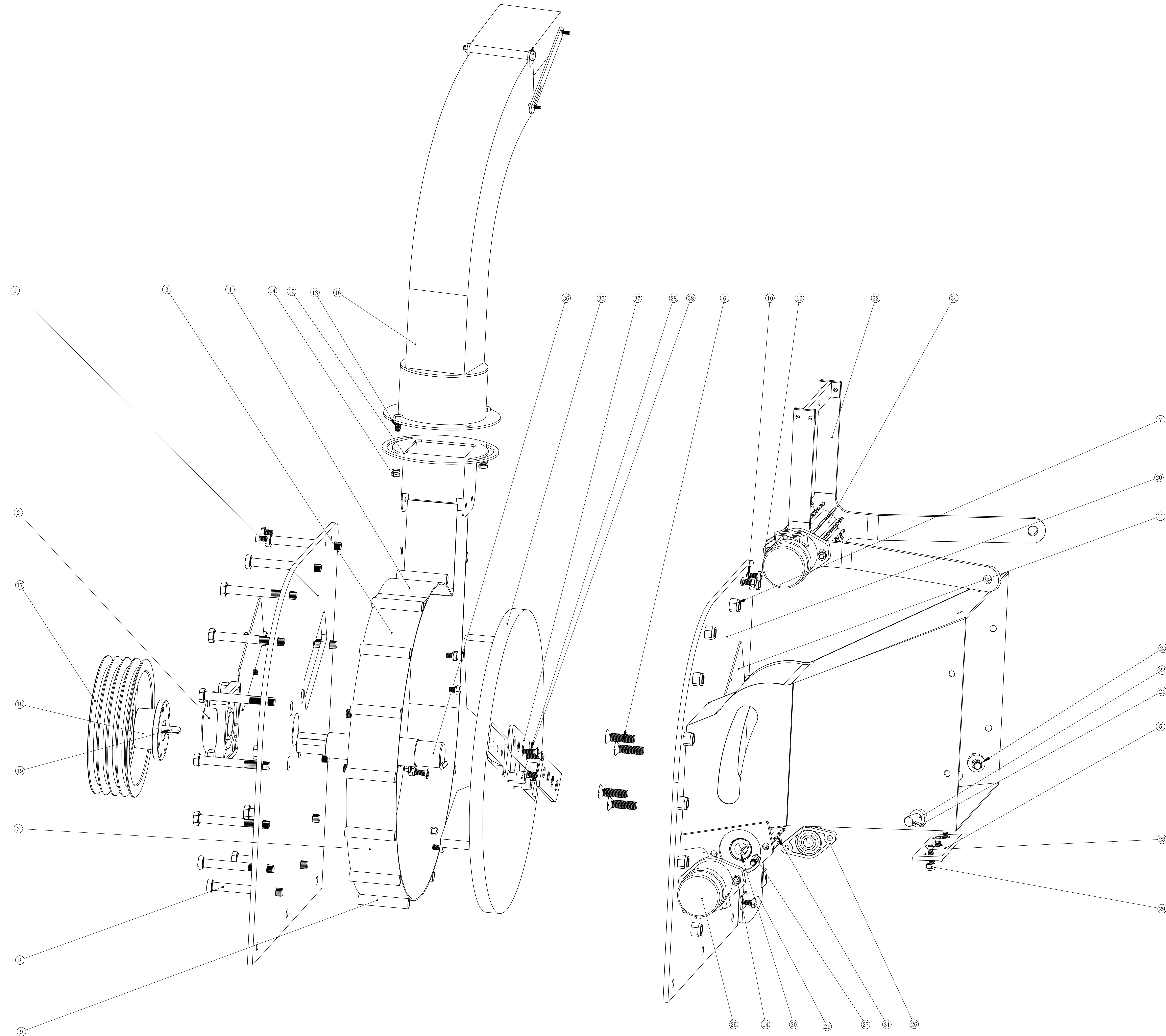


ITEM	PART NUMBER	PART NAME	QTY.	MATERIAL	REMARK
1	DH003	SHIELD	1		ASSEMBLY
2	DH004	WHEEL-COVER	2		
3	DH005	SUPPORT LEG	2		
4	B001	BOLT M10x35	4		GB/T 5780-2000
5	B040	SPRING WASHER 10	6		GB/T 95-2000
6	B022	NUT 10	6		GB/T 41-2000
7	DH007	PLATE SPRING	2		ASSEMBLY
8	DH008	LIFTING EYE	4		
9	DH006	5-HOLE BOARD	2		
10	DH009	U BOLT	4		
11	B023	NUT 12	24		GB/T 6170-2000
12	B011	BOLT M16x80	6		GB/T 5782-2000
13	B021	LOCKNUT 16	6		GB/T 889.1-2000
14	B012	BOLT M16x100	4		GB/T 5782-2000
15	B044	WASHER 16	4		GB/T 95-2000
16	B025	NUT 16	4		GB/T 889.1-2000
17	B041	SPRING WASHER 16	2		GB/T 95-2000
18	B017	BOLT M10x25	6		GB-T 5780-2000
19	DH010	TRAILER	1		WELDMENT
20	DH011	HITCH JACK	1		ASSEMBLY
21	B006	BOLT M12x75	4		GB/T 5780-2000
22	B043	WASHER 12	4		GB/T 95-2000
23	DH012	FUEL TANK1	1		WELDMENT
24	DH013	WHEELS	1		ASSEMBLY
25	DH014	HITCH	1		WELDMENT
26	B002	BOLT M10x60	2		GB-T 5780-2000
27	B008	BOLT M12x80	4		GB/T 5780-2000
28	DH015	DIESEL ENGINE	1		COMPONENT-480
29	DH016	MUFFLER	1		WELDMENT
30	DH017	AIR CLEANER	1		ASSEMBLY
31	DH018	HYDRAULIC PUMP	1		COMPONENT
32	DH019	ENGINE BELT PULLY	1		
33	B003	BOLT M12x35	3		GB/T 5780-2000
34	B009	BOLT M12x120	2		GB/T 5780-2000

POWER SYSTEM UNIT

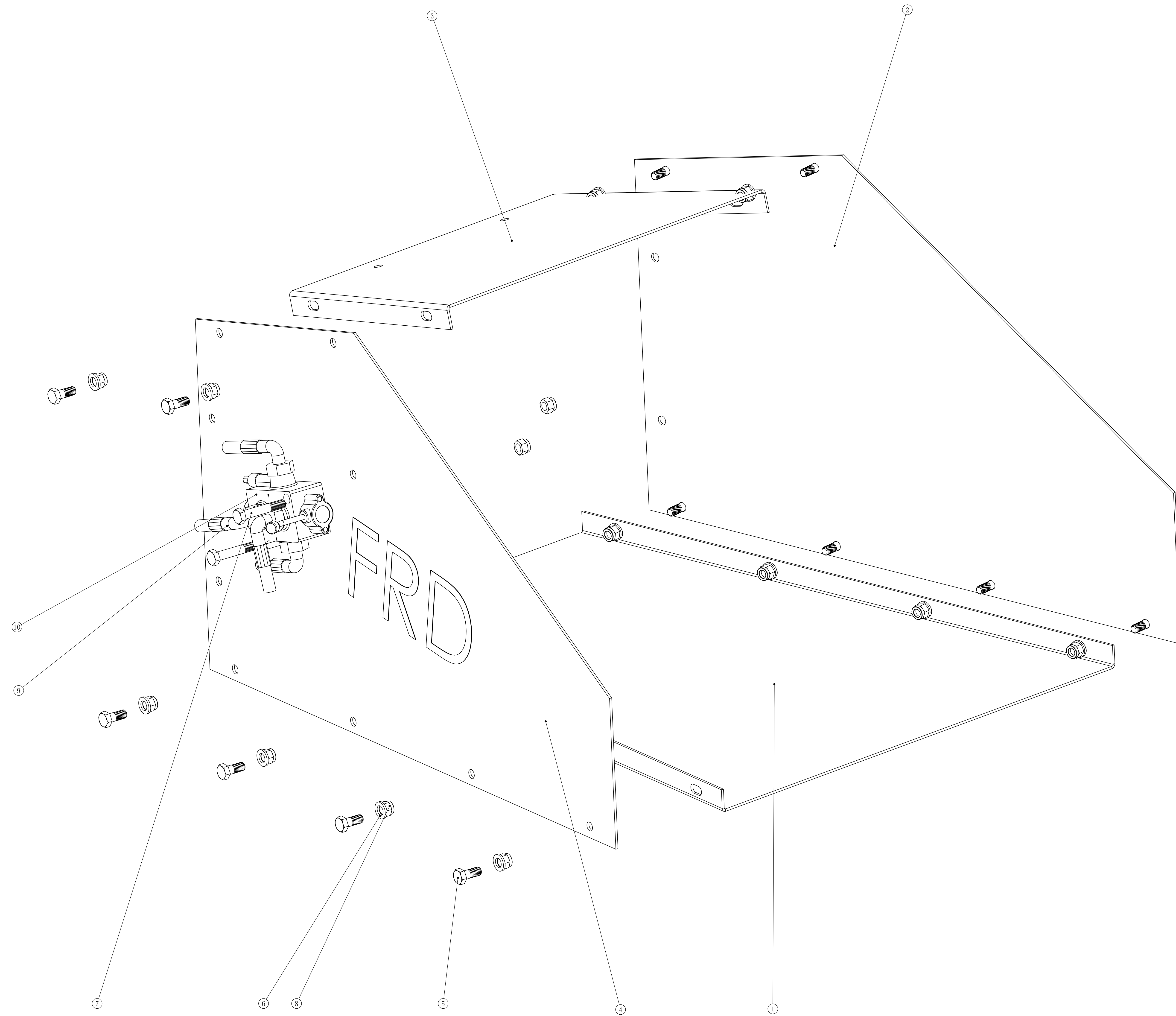
ITEM	PART NUMBER	PART NAME	QTY.	MATERIAL	REMARK
1	DH003	SHIELD	1		ASSEMBLY
2	DH004	WHEEL-COVER	2	Q235	
3	DH005	SUPPORT LEG	2	Q235	
4	B001	BOLT M10x35	4		GB-T 5780-2000
5	B040	SPRING WASHER 10	6		GB/T 95-2000
6	B022	NUT 10	6		GB/T 41-2000
7	DH007	PLATE SPRING	2		ASSEMBLY
8	DH008	LIFTING EYE	4	45	
9	DH006	5-HOLE BOARD	2	Q235	
10	DH009	U BOLT	4	45	
11	B023	NUT 12	24		GB/T 6170-2000
12	B011	BOLT M16x80	6		GB/T 5782-2000
13	B021	LOCKNUT 16	6		GB/T 889.1-2000
14	B012	BOLT M16x100	4		GB/T 5782-2000
15	B044	WASHER 16	4		GB/T 95-2000
16	B025	NUT 16	4		GB/T 889.1-2000
17	B041	SPRING WASHER 16	2		GB/T 95-2000
18	B017	BOLT M10x25	6		GB-T 5780-2000
19	DH010	TRAILER	1		WELDMENT
20	DH011	HITCH JACK	1		ASSEMBLY
21	B006	BOLT M12x75	4		GB/T 5780-2000
22	B043	WASHER 12	4		GB/T 95-2000
23	DH012	FUEL TANK1	1		WELDMENT
24	DH013	WHEELS	1		ASSEMBLY
25	DH014	HITCH	1		WELDMENT
26	B002	BOLT M10x60	2		GB-T 5780-2000
27	B008	BOLT M12x80	4		GB/T 5780-2000
28	DH015	DIESEL ENGINE	1		COMPONENT- 480
29	DH016	MUFFLER	1		WELDMENT
30	DH017	AIR CLEANER	1		ASSEMBLY
31	DH018	HYDRAULIC PUMP	1		COMPONENT
32	DH019	ENGINE BELT PULLY	1	HT200	
33	B003	BOLT M12x35	3		GB/T 5780-2000
34	B009	BOLT M12x120	2		GB/T 5780-2000





ITEM	PART NUMBER	PART NAME	QTY.	MATERIAL	REMARK
1	D001	DISK HOUSE BOARD 2	1	Q235	
2	B060	BEARING F210	2		ASSEMBLY
3	TY007	CHIPPER DISK COVER	1	Q235	
4	TY008	CHIPPER DISK CONNECTED COVER	1	Q235	
5	TY009	ANVIL	1	65Mn	
6	B033	SCREW M16x55[GB-T819-2000]	8		GB/T 68-2000
7	B021	LOCKNUT 16	25		GB/T 889.1-2000
8	B013	BOLT M16x140	13		GB/T 5782-2000
9	TY010	SPACER SLEEVE	13	Q235	
10	B040	SPRING WASHER 10	18		GB/T 95-2000
11	TY011	BLADE REPLACE COVER	2	Q235	
12	B016	BOLT M10x15	10		GB-T 5780-2000
13		BOLT M10x25	2		GB-T 5780-2000
14	B022	NUT 10	10		GB/T 41-2000
15	TY013	ADAPTER-CONNECTOR	1	Q235	WELDMENT
16	TY012	DISCHARGE TUBE	1		ASSEMBLY
17	D002	BELT PULLY	1	HT200	
18	D003	BUSHING	1	45 STEEL	
19	B081	Key C12-8-70	1		GB/T 1096-2003
20	D004	DISK HOUSE BOARD 1	1	Q235	WELDMENT
21	TY014	CLEAN-OUT COVER	1	Q235	
22	TY015	AXIS	2	45 STEEL	
23	B023	NUT 12	2		GB/T 6170-2000
24	TY016	PIN	1	Q235	
25	TY017	Hydraulic Motor	1		COMPONENT
26	B061	BEARING FL204	2		GB/T 7810-1995
27	B001	BOLT M10x35	8		GB-T 5780-2000
28	B031	SCREW M10x40	11		GB 2673-86
29	B020	LOCKNUT 10	11		GB/T 889.1-2000
30	B082	KEY 8-7-40	2		GB/T 1096-2003
31	H001	FIXED FEED ROLLER	1		WELDMENT
32	DH020	HANGING BRACKET	1		WELDMENT
33		Hydraulic Motor	1		
34	H002	ACTIVE FEED ROLLER	1		WELDMENT
35	D005	CHIPPER DISK	1		WELDMENT
36	DH021	DISK SHAFT	1	45 STEEL	
37	TY018	Blade	2	65Mn	
38	B032	SCREW M16x55	4		GB/T 70.1-2000

CHIPPING SYSTEM UNIT					
ITEM	PART NUMBER	PART NAME	QTY.	MATERIAL	REMARK
1	D001	DISK HOUSE BOARD 2	1	Q235	
2	B060	BEARING F210	2		ASSEMBLY
3	TY007	CHIPPER DISK COVER	1	Q235	
4	TY008	CHIPPER DISK CONNECTED COVER	1	Q235	
5	TY009	ANVIL	1	65Mn	
6	B033	SCREW M16x55[GB-T819-2000]	8		GB/T 68-2000
7	B021	LOCKNUT 16	25		GB/T 889.1-2000
8	B013	BOLT M16x140	13		GB/T 5782-2000
9	TY010	SPACER SLEEVE	13	Q235	
10	B040	SPRING WASHER 10	18		GB/T 95-2000
11	TY011	BLADE REPLACE COVER	2	Q235	
12	B016	BOLT M10x15	10		GB-T 5780-2000
13	B017	BOLT M10x25[GB-T5780-2000]	2		GB-T 5780-2000
14	B022	NUT 10	10		GB/T 41-2000
15	TY013	ADAPTER-CONNECTOR	1	Q235	WELDMENT
16	TY012	DISCHARGE TUBE	1		ASSEMBLY
17	D002	BELT PULLEY	1	HT200	
18	D003	BUSHING	1	45 STEEL	
19	B081	Key C12x8x70	1		GB/T 1096-2003
20	D004	DISK HOUSE BOARD 1	1	Q235	WELDMENT
21	TY014	CLEAN-OUT COVER	1	Q235	
22	TY015	AXIS	2	45 STEEL	
23	B023	NUT 12	2		GB/T 6170-2000
24	TY016	PIN	1	Q235	
25	TY017	Hydraulic Motor	1		COMPONENT
26	B061	BEARING FL204	2		GB/T 7810-1995
27	B001	BOLT M10x35	8		GB-T 5780-2000
28	B031	SCREW M10x40	11		GB 2673-86
29	B020	LOCKNUT 10	11		GB/T 889.1-2000
30	B082	KEY 8x7-40	2		GB/T 1096-2003
31	H001	FIXED FEED ROLLER	1		WELDMENT
32	DH020	HANGING BRACKET	1		WELDMENT
33		Hydraulic Motor	1		
34	H002	ACTIVE FEED ROLLER	1		WELDMENT
35	D005	CHIPPER DISK	1		WELDMENT
36	DH021	DISK SHAFT	1	45 STEEL	
37	TY018	Blade	2	65Mn	
38	B032	SCREW M16x55	4		GB/T 70.1-2000



ITEM	PART NUMBER	PART NAME	QTY.	MATERIAL	REMARK
1	TY022	BOTTOM BOARD	1	Q235	
2	TY020	RIGHT BOARD	1	Q235	
3	TY018	TOP BOARD	1	Q235	
4	TY019	LEFT BOARD	1	Q235	
5	B017	BOLT M10x25	12		GB/T 5780-2000
6	B042	WASHER 10	12		GB/T 95-2000
7	B002	BOLT M10x60	2		GB/T 5780-2000
8	B020	LOCKNUT 10	14		GB/T 889.1-2000
9	H003	ELBOW UNION	4		
10	TY023	Reversing Valve	1		COMPONENT

CHIPPER CHUTE EXTENSION			DWG. NO.	PAGE 1
DESIGNED	(NAME)	(DATE)	SCALE	TOTAL SHEETS: 1
DRAWN			1:5	
CHECKED				WF FRD APM Co.Ltd

CHIPPER CHUTE EXTENSION

ITEM	PART NUMBER	PART NAME	QTY.	MATERIAL	REMARK
1	TY022	BOTTOM BOARD	1	Q235	
2	TY020	RIGHT BOARD	1	Q235	
3	TY018	TOP BOARD	1	Q235	
4	TY019	LEFT BOARD	1	Q235	
5	B017	BOLT M10x25	12		GB-T 5780-2000
6	B042	WASHER 10	12		GB/T 95-2000
7	B002	BOLT M10x60	2		GB-T 5780-2000
8	B020	LOCKNUT 10	14		GB/T 889.1-2000
9	H003	ELBOW UNION	4		
10	TY023	Reversing Valve	1		COMPONENT